



GAT MONTHLY MEMBERSHIP PROGRESS REPORT

Results as of: 5/31/2022

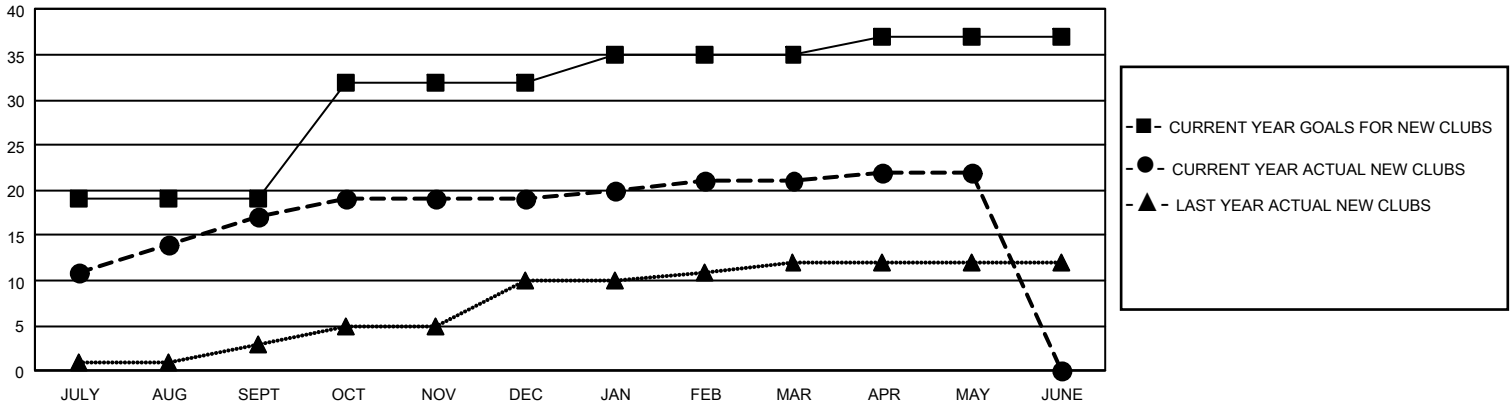
GMT Constitutional Area 5 - M, Group F

REPORT DOES NOT INCLUDE CLUBS IN UNDISTRICTED AREAS.

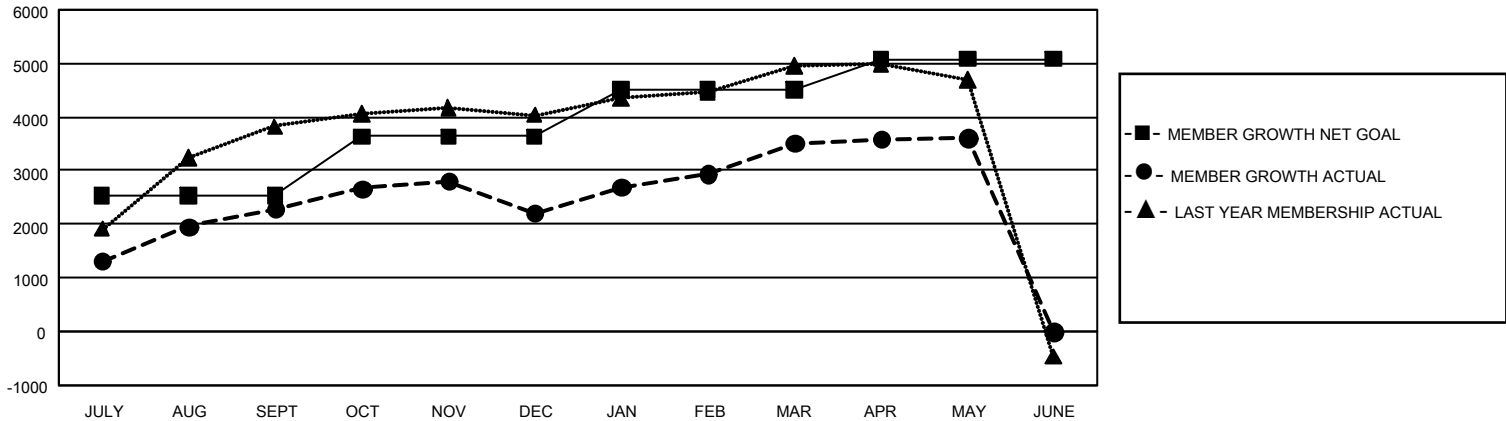
Clubs			
RESULTS FOR 2021-2022			
QUARTER	NEW CLUB GOAL	NEW CLUBS	DROPPED CLUBS
JULY/AUG/SEPT	57	17	8
OCT/NOV/DEC	39	2	5
JAN/FEB/MAR	9	2	4
APR/MAY/JUNE	6	1	2

Members			
RESULTS FOR 2021-2022			
QUARTER	MEMBER GROWTH NET GOAL	MEMBER GROWTH ACTUAL	DROPPED MEMBERS ACTUAL (including transfers)
JULY/AUG/SEPT	2540	4,124	1,480
OCT/NOV/DEC	1100	1,199	1,128
JAN/FEB/MAR	864	1,727	268
APR/MAY/JUNE	573	274	140

GOALS AND ACTUAL NEW CLUBS CUMULATIVE



GOALS AND ACTUAL MEMBERS CUMULATIVE



DROPPED CLUBS: 19	934 CLUBS OF 1,120 ADDED 1 OR MORE NEW MEMBERS	<u>GENDER DISTRIBUTION</u>	
		MALE 28,367 (65.96%) FEMALE 14,620 (34.00%) NON BINARY 0 (0.00%) PREFER NOT TO ANSWER 17 (0.04%)	
<u>DROPPED MEMBERS</u>		CLICK HERE FOR CUMULATIVE MEMBERSHIP DATA	TOTAL FAMILY UNIT MEMBERS 8,293
DECEASED 87 CLUB CANCELLED 53 OTHER 2,876 TOTAL 3,016	FAMILY MEMBERS PAYING HALF DUES 5,034		